

Patterns
Poems and
Puzzles



Ruth Ewan has used poems by Gustav Spiller in her project. Spiller was a campaigner who tried to make the world a better place.

Think of something you feel strongly about that would make your town or the whole world a better place. Write a message or a poem about this in the box below:

.....

.....

.....

.....

.....

.....

.....

Ruth has used posters and Frome's town crier, who in the past was used like a talking newspaper, to get people's attention.

How would you get your message to people? Write a pop song? Text or email your friends? Make a poster or leaflet? Describe your idea(s) below:

.....

.....

.....

.....

.....

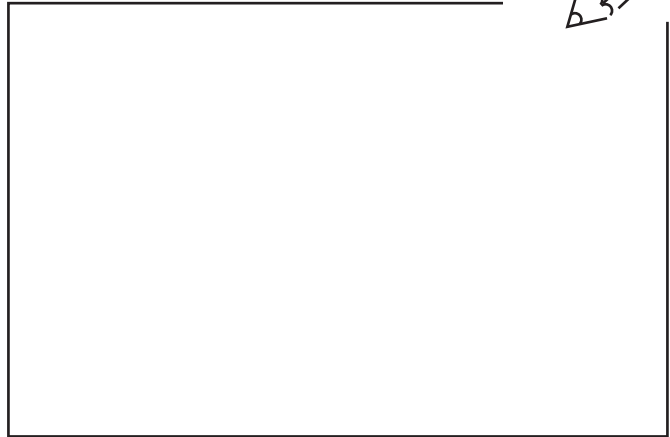
.....

.....

When you get home why don't you put it into action?

Lawrence Weiner believes you don't need to make art out of things, you can just write down what is in your imagination and this is art. One of his works just says COVERED BY CLOUDS. Another says A GLACIER VANDALISED.

Close your eyes and imagine a picture that has no people or animals in it. Draw your picture in the box below:



Now look at your picture. Write a simple description of your picture like Lawrence would do. Think about the objects you have drawn, what they are doing and what colour they are. Use as few words as possible. USE CAPITALS LIKE LAWRENCE. Choose a colour to write it in and where you would put it.

.....

Lawrence Weiner paints sentences on buildings. They look like signs.

As you are walking around the town write down all the different places where you find words.

What are these words doing?
Are Lawrence's words different or the same?

.....

This is the alphabet that the designers A2 made for this exhibition. You can colour them in using different colours. You can do the same with the pattern they designed that is on the cover.



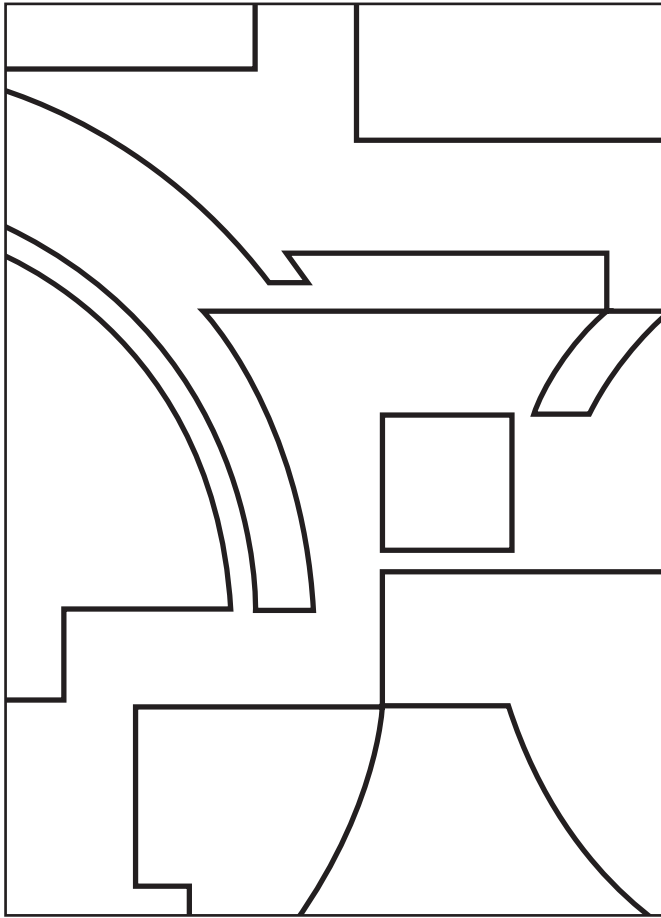
Eva Berendes has made a huge pattern that takes over The Weaving Shed. What is Eva's artwork made of? What does it remind you of? Where would you normally expect to find this? Write your answers below:



How many colours has Eva used in her pattern?

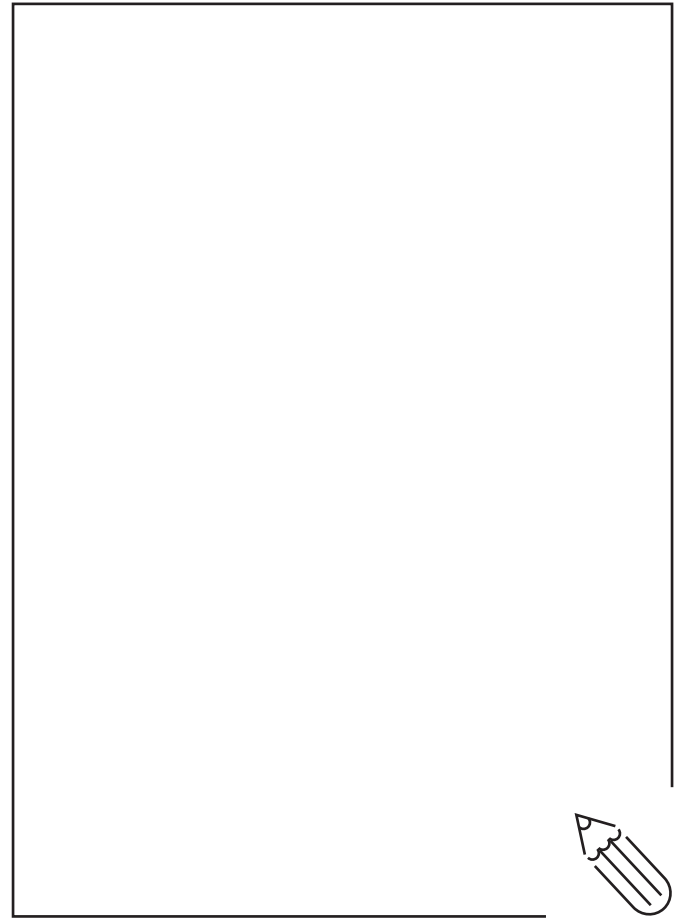
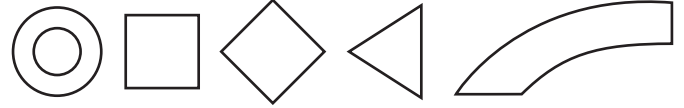
What colours does Eva use?

What kind of pattern is it?



Colour in Eva's pattern using the same amount of colours as Eva.

Follow these instructions to create your own abstract design in the blank box. Fill the box with lots of lightly drawn squares, rectangles and circles (or other shapes) and only colour in the parts that overlap. Rub out the other lines to reveal your design.



Pattern is all around us - in the leaves on a tree, the bricks in a wall, carved into stone, in pictures and even in the way we use words. For example the Philip Larkin poem that Cornelia Parker has used in her artwork has a pattern of rhyming words. As you explore the exhibition you will see natural, geometric and abstract patterns in the artworks. In the space below write the names of the artists who use pattern in their work, what type of pattern they use and how they use it:

GHIJKL M



Look at the exhibition leaflet carefully. How many different colours did A2 use in the pattern?



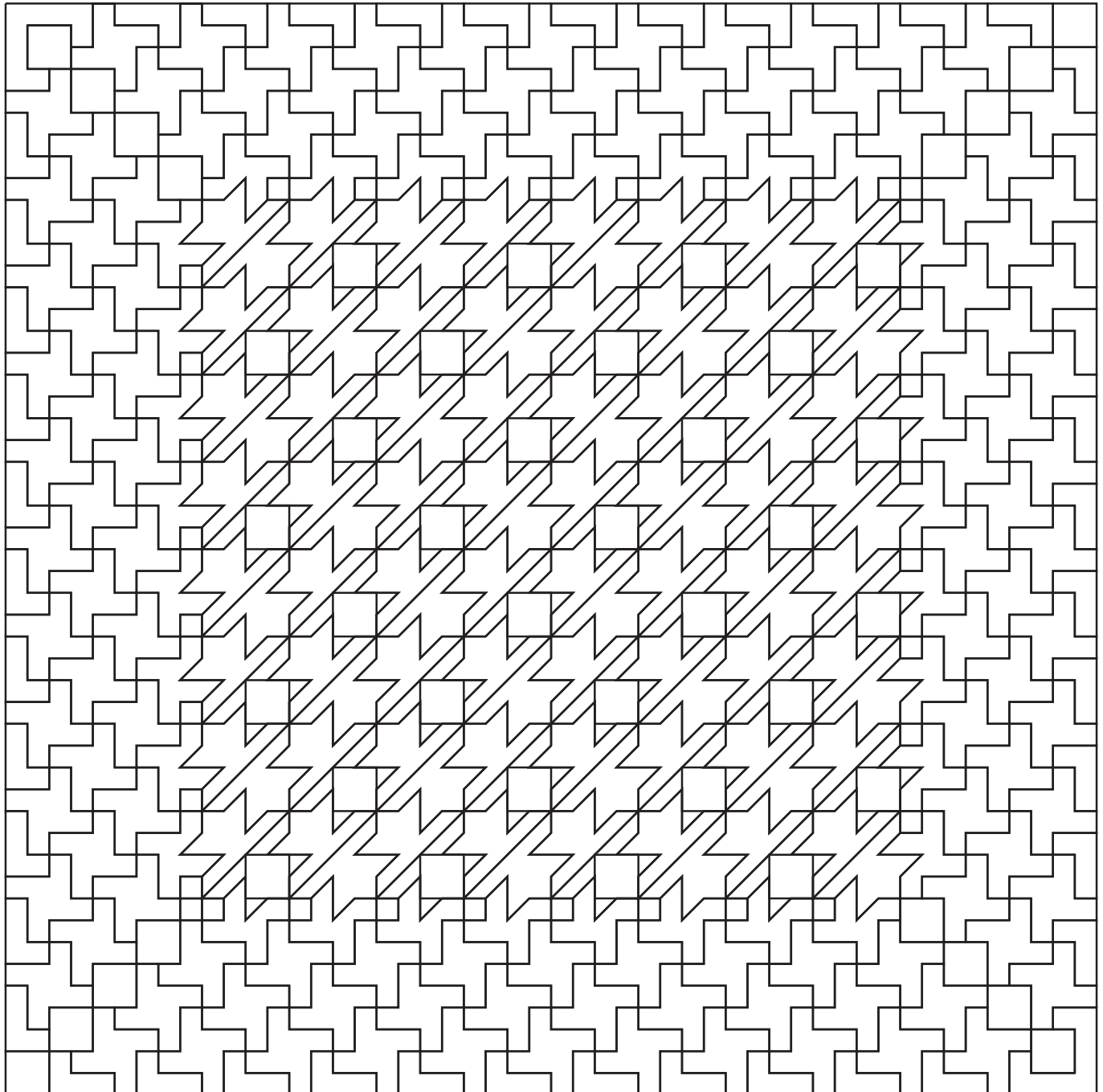
How many times did they use each one?

Jim Isermann looked at old fabrics to get ideas for his pattern poster. Jim uses pattern to transform spaces and things – he’s even wrapped a pattern round a Tube train. Jim’s poster has been pasted up in lots of places around the town. How many places have you seen his poster?

How many colours has Jim used in his pattern?

What colours does Jim use?

What kind of pattern is it?



Jim's pattern poster

Use the letters in strange ways to make a picture where you can't recognise them anymore like Michael.

Michael Dean, Ruth Ewan, Cornelia Parker and Lawrence Weiner all use words in different ways to make their artwork in the exhibition.

N O P Q R S T

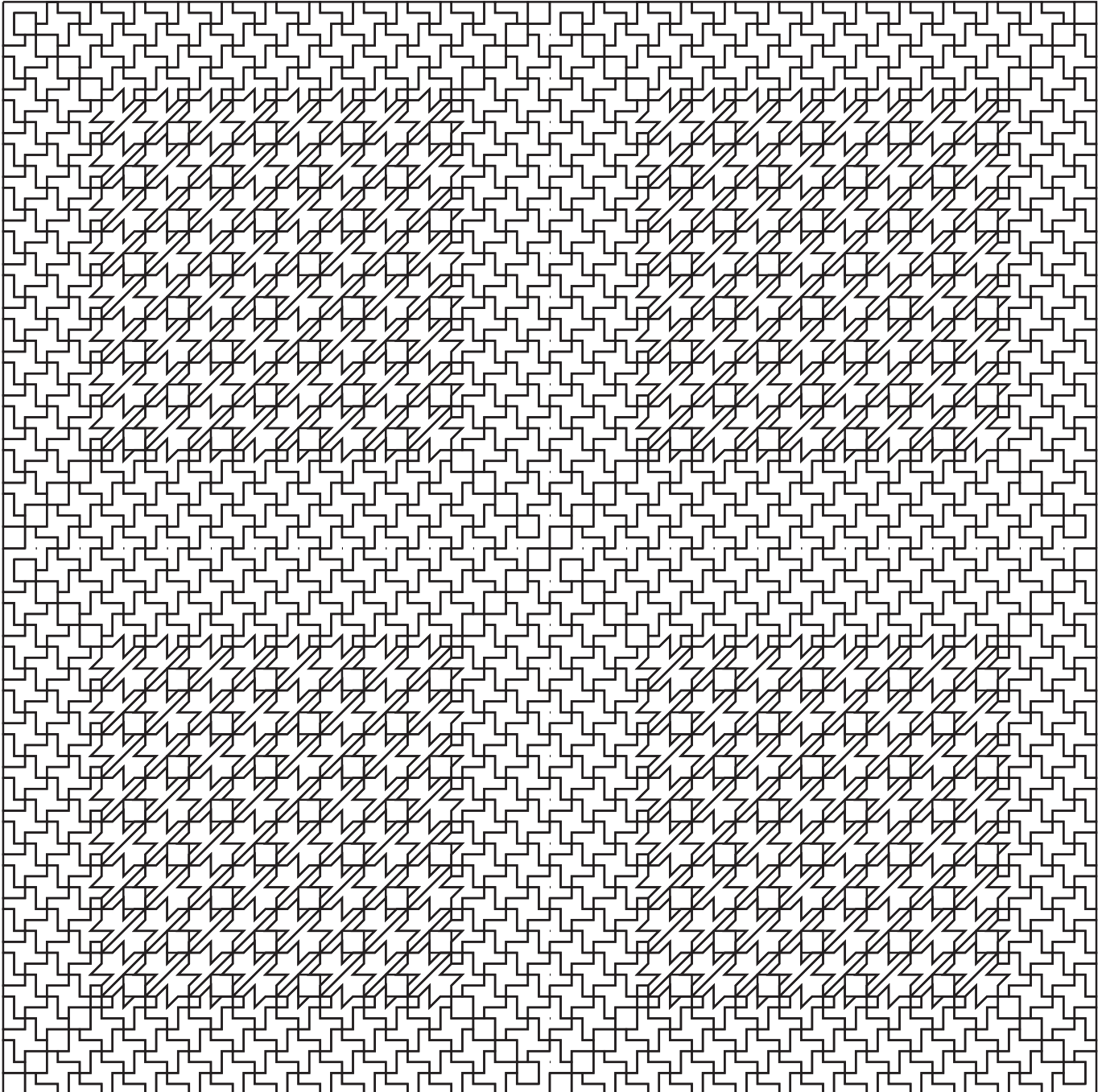


Colour in Jim's pattern using the same amount of colours as Jim. Use one combination of colours on the single poster module on the opposite page and a different combination on the repeated pattern below:

When you are walking around the town look on buildings for other geometric patterns. List three different types of geometric patterns you have found below:



Jim's pattern repeated



Cut out the letters, trace them, photocopy them, make them bigger or smaller, make a stencil from them, use them to make your own art. You could make a collage of words on a photo of a building like Lawrence or use a poem like Cornelia and Ruth.



Richard Woods uses pattern and decoration to make a whole or part of a building feel different. He uses colours and designs that often clash with the place in which he installs them.

Richard's pattern is made to look like wood grain. He has made it bigger than in real life.




Colour in Richard's pattern using the same amount of colours as Richard.


What kind of pattern is it?

How many colours has Richard used?

What colours does Richard use?



1 

2 

Find a natural pattern (for example this could be a piece of wood, a leaf, or your fingerprints).

In the first box above draw the pattern you have found as accurately as you can. Then in the second box pick a section of it, enlarge it and colour it in.

In the installation why not play this game? Choose your favourite colour and try to get from one side to the other only stepping on floorboards painted this colour!

All the artists in Intervention/Decoration change the way we think about buildings and places around us by altering the way they look in exciting and unusual ways. Pick a building or place and think about how you would like to change it and why.

Let your imagination break the rules of how it is supposed to look. Draw or describe what you would do and how it would look in the box opposite.



Michael Dean has used unusual materials to make a strange sculpture garden. Michael has used lots of different materials but not many colours.

Some of Michael's materials are fragile and some are strong. List the different materials Michael has used in the two categories below:

How many colours has Michael used?

0 1 2 3 4 5 6 7 8 9

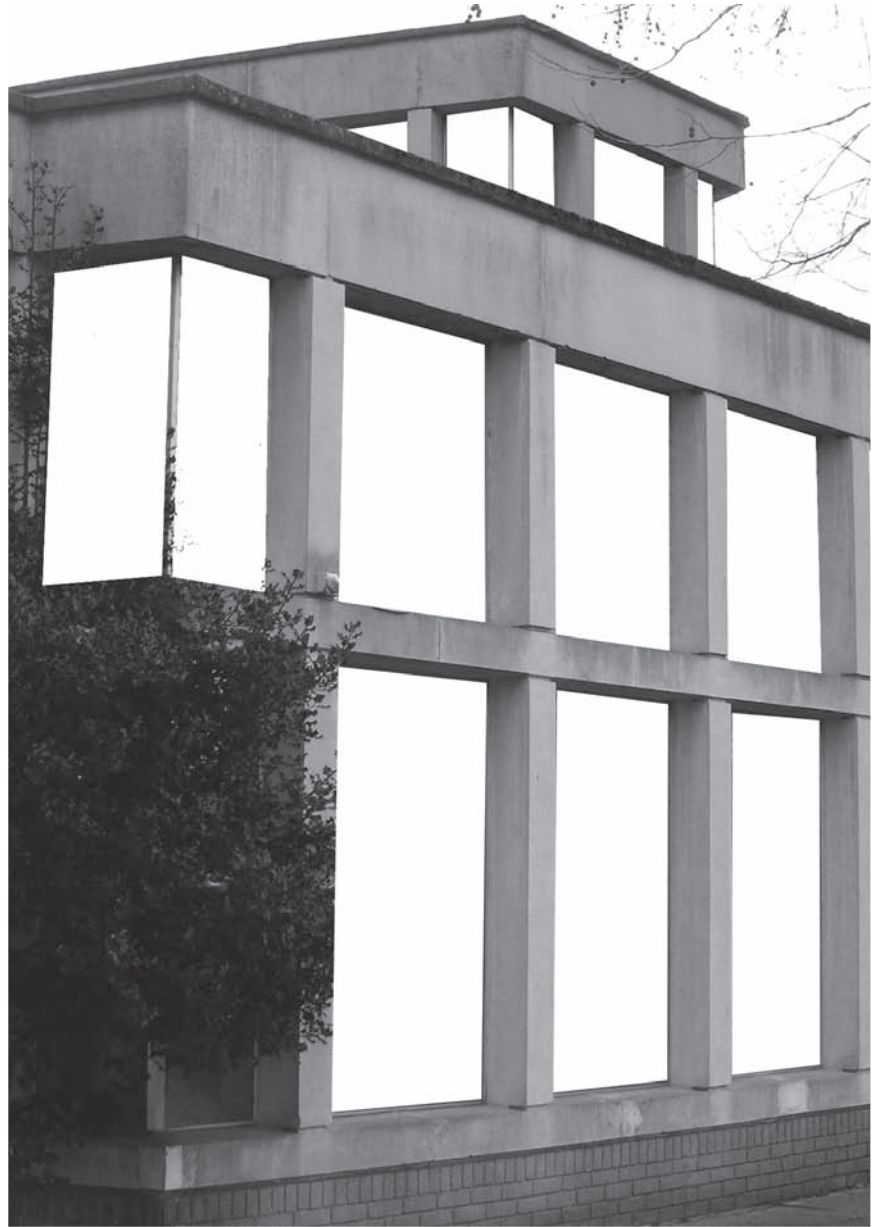
Sometimes pattern is hard to find. Michael uses two geometric shapes in lots of places in his sculpture and photographs. Find them and write down what they are here:



STRONG:

FRAGILE:

This is Ellenbray toy shop where Michael has made his sculpture garden. Michael changed the building in a simple way by putting patterns in the windows. Draw your own patterns in the blank window spaces in the photograph.



Intervention/Decoration wordsearch:
This is hard. Some of the words are backwards or diagonal in the grid.

Visit the website to find the wordsearch solution grid

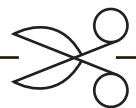


Huge thanks to Crosswords Ltd, the puzzle masters, who generously created the wordsearch for us. www.sudoku.org.uk

- ABSTRACT
- APPROPRIATION
- ARCHITECTURE
- BOUNDARY
- CLASH
- COLLAGE
- COLOUR
- COMPARE
- CONTEXT
- CONTRAST
- DECORATION
- DESCRIPTION
- DESIGN
- DIAGONAL
- DISTORT
- ENVIRONMENTS
- EXAGGERATE
- FACTUAL
- GEOMETRIC
- GEOMETRY
- HISTORY
- IMAGE
- INSTALLATION
- INTERVENTION
- LANGUAGE
- NATURAL
- OBJECT
- PAINT
- PATTERN
- PRINT
- PROCESS
- SEQUENCE
- TESSELLATE
- UTOPIA

Would you like the chance to win a prize? Fill in the section below and tell us what you thought of the exhibition. Then hand it in to any of the exhibition venues or the Project Hub.

3 lucky entrants will be picked at random to win cool art materials.



Name:

Age:

Address:

I think that Intervention/Decoration was:



LOTTERY FUNDED